



# Sylko Trilobal Polyester

Excellence in embroidery



# Coats Sylko



Art / Tkt	Tex	Ticket	Length	Strength cN	Elongation % Min - Max	Needle Size Metric
3220 180	18	180	2000m	750	20 - 28	65 - 75
3288 120	27	120	3000m	1140	20 - 28	75 - 90
3220 080	40	80	2000m	1830	20 - 28	75 - 90
3215 060	50	60	1500m	2330	20 - 28	90 - 100

Some markets have alternative standard lengths; use 3289 for 5000m; 3291 for 4000m; 3288 for 3000m; 3220 for 2000m.

## Textile care labelling



Coats Sylko is made from trilobal polyester continuous filament. Please refer to the below table for the properties of Coats Sylko trilobal polyester embroidery thread and the advantages compared with viscose rayon thread:

Property	Benefits of Coats Sylko trilobal polyester embroidery thread
<b>Lustre / sheen</b>	The trilobal cross-section of the filament combines high strength with excellent sheen.
<b>3D-effect</b>	Coats Sylko trilobal polyester gives more volume to satin stitches and a slight 3D effect.
<b>Abrasion resistance</b>	Coats Sylko trilobal polyester has a high level of abrasion resistance making it particularly suitable for sportswear.
<b>Chemical resistance</b>	Trilobal polyester is more resistant to chemical damage and degradation than viscose rayon.
<b>Strength / tenacity</b>	Coats Sylko exhibits excellent tenacity. Multi-head embroidery machines can be run at high speed with less thread breaks.
<b>Colour fastness</b>	For the highest level of colour fastness, use Sylko WF which is available in a select range of shades.

Coats is your trusted partner for embroidery expertise. **Coats Embroidery Solution Centres** located in key embroidery markets service both local customers and global partners with embroidery technical support, ensuring you get the result you expect. Our extensive, creative product range in embroidery and embellishment threads meets the most imaginative expectations. Whether metallic, glow-in-the-dark, reflective or matt-effect embroidery, it is your choice.

## Corporate Responsibility - Coats is committed to acting responsibly

We operate to the highest ethical business and employment standards across all our global operations.

Our approach to CR is focused on seven strategic themes, all of which support and contribute to the achievement of our business goals. These were developed along with measurable objectives and action plans, for which senior managers across the business are responsible.



For more information visit [www.coats.com/corporateresponsibility](http://www.coats.com/corporateresponsibility)

Coats threads are manufactured and quality controlled to the highest standards possible. Since the conditions of use, washing, pressing and cleaning etc. vary, the purchaser should assure themselves by preliminary tests that the dye fastness of the yarn or thread is 100% colourfast to crocking or washing under all conditions. We cannot be responsible for any consequential damages howsoever caused since the value of the thread is so disproportionate to the value of the goods into which it is stitched.

[www.coats.com](http://www.coats.com)



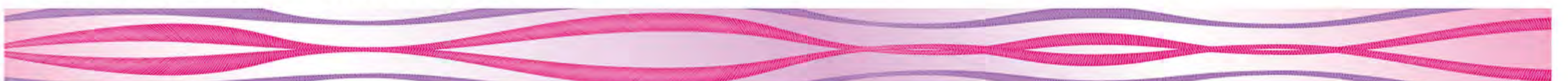


# Sylko Shibuya Shade Card



Shade no.	Strip 1	Shade no.	Strip 2	Shade no.	Strip 3	Shade no.	Strip 4	Shade no.	Strip 5	Shade no.	Strip 6
B1719*		B1222		B1464		B1325		B8915		B3174	
B1003*		B1284		B8314		B2705		B8792		B3135	
B1008		B1261		952TH		B8141		B4078		B3160	
B2704		B1286		B1327		B0094		B1158		B4399	
B0216		B1282		B0327		B8105		B0325		B3168	
B9130		B1256		B2367		B1322		B0324		B0103	
565QP		B1423		B0329		B8376		B2351		B3163	
B2707		B1265		B8974		B8393		B2328		B3105	
B8183		B1269		B2358		B8621		B2316		B3137	
B8257		B1431		B1371		B8619		B2140		B3146	
B8143		B1432		B1360		B8651		B8977		B3154	
B1156		B1270		B1235		B8780		B8365		B1330	
B1171		B1273		B1112		B8768		856PA		B2158	
B1182		B0207		B1233		B2330		B8367		B1041	
B1183		B1271		B1899		B2285		B0326		811PA	
B1181		324TH		919PA		B2298		B8350		B2120	
B1195		B2470		B1339		B2310		B1345		B2159	
B1234		B1418		B8129		B2292		B2160		B1328	
B1236		B1413		B8146		B2375		B2153		B1394	
B1237		B1415		B8134		B8724		B3170		B2488	
B1900		B1435		B8175		B8759		B3167		B2485	
B1214		B1439		B8180		B8715		B3164		B2464	

\* Indicates the white shades B1719 and B1003 contain OBA (optical brightening agents).





# Sylko Shibuya Shade Card



Shade no.	Strip 7	Shade no.	Strip 8	Shade no.	Strip 9	Shade no.	Strip 10	Shade no.	Strip 11	Shade no.	Strip 12
B2458		B2224		B3949		B4322		B3660		B7412	
B2452		B0113		B8935		B4355		B3670		B7408	
B8710		B3884		B4079		B4347		B3632		B7224	
B2463		B3898		286TA		B0618		B4005		B1704	
B1128		B3891		B8653		B0121		B3690		B9355	
B2431		B3928		B8932		B4341		B3698		B7416	
B2225		B0115		B8921		B4357		B3610		B7406	
B2245		B3831		B7899		B4155		B4326		B7235	
B2244		B3845		B4910		B4143		B4315		B4687	
B2246		294TA		B3955		B0622		714AM		B7414	
B2256		B4015		B0119		B8378		B4306		B7407	
B3869		B4016		691TM		858PA		B4646		B7267	
B2275		B3796		B4367		B3319		B4651		B0402	
B3432		B3992		B4374		B8723		637TA		B7411	
B2291		B3960		B4369		B8740		B4972		B7348	
B3435		B3989		B3684		B3364		B4942		B7404	
B3488		B3375		B4370		B0143		B4117		B7536	
B3487		B3377		B4916		B3178		B4144		B6998	
B3483		B3951		B4918		B4398		B0607		B6317	
B3456		B3976		B4955		B3671		B4686		B7491	
B3439		B3979		B4654		B3672		B4688		B7484	
B3872		B8725		637TH		B3674		B7263		B7410	

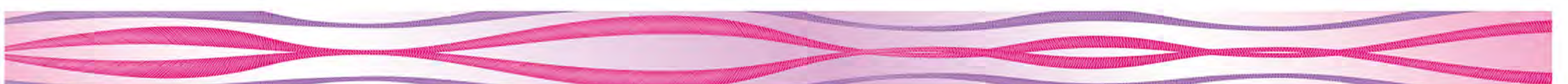




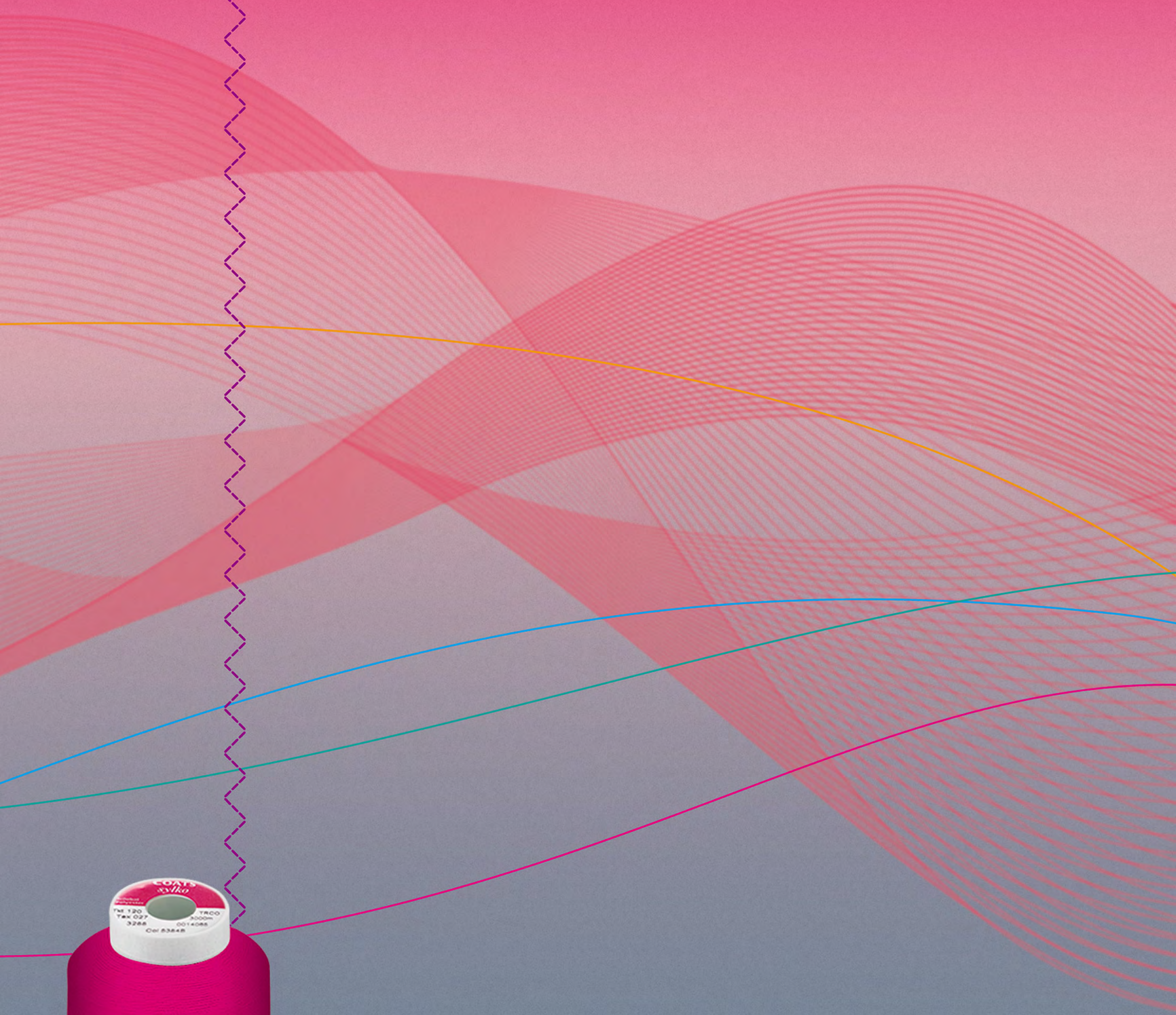
# Sylko Shibuya Shade Card



Shade no.	Strip 13	Shade no.	Strip 14	Shade no.	Strip 15	Shade no.	Strip 16	Shade no.	Strip 17	Shade no.	Strip 18
B7403		616AM		B6380		B6947		B5148		B5126	
B7409		B7972		B6325		942TH		B5193		B5232	
B7390		B7896		614AM		B6977		B5251		B5235	
B7402		988PA		B6335		B0419		B5249		B5209	
B4640		B7440		B6383		B6940		B5163		B5929	
B7323		B7442		B6124		B1755		B6661		B6612	
B7401		B7422		B6153		B6999		B5151		B5989	
B7415		545PB		B6155		B6350		B0502		B5238	
B7405		B7439		B6698		B6666		B5245		B1582	
B7400		923TM		B6663		B6910		B5242		B5992	
B7444		B7578		B6628		B6981		B5391		B5962	
B7413		B6984		B5206		B6972		B5395		B5526	
B4653		B4031		B6665		552PB		B5248		B5752	
B7387		B7877		B6136		B6975		B5129		B5757	
B7526		B7878		B6109		B0413		B5241		B5939	
B7905		B0139		B0273		B6399		B1562		861PA	
B7926		B1569		B6323		B4067		B5250		B9596	
B7898		597PB		B6362		B0542		B5231		B5542	
B7520		B9172		B6327		B6160		B5237		857PA	
B7983		B9169		B6360		B5185		B5226		B0499	
555PB		B0628		B6365		B5281		B5219		B1178	
B7897		821PA		B6938		B5170		B5236		B1199	







COATS  
*sylka*  
TM 120 TRCO  
TAX 027 2000m  
3288 0014086  
Col 83848

