

ecoVerde 

# MASTER SHADECARD



CC-SCMSC80020  
MARCH 2024

CONNECTING. PIONEERING. TRUSTED.

## WHO WE ARE

Coats is a brand and organisation where heritage meets innovation. Our purpose is to harness talent and technology in a way that benefits our customers, our people and the communities in which we operate. It's about more than just thread.

At home in some 50 countries, Coats has a workforce of over 18,000 staff across six continents. Headquartered in the UK, Coats is a FTSE 250 company, a constituent of the FTSE4Good UK Index and a participant in the UN Global Compact.

Our pioneering approach and innovative culture are what set us apart from our competitors. We are trusted to provide products, services and software solutions that add value to the Apparel and Footwear industries. Our innovation has enabled us to develop high technology Performance Materials threads, yarns and fabrics in areas such as automotive, composites, fibre optics and oil and gas.

## SEWING THREADS AND YARNS

No matter how complex your operations and requirements are, Coats provides the best sewing threads and yarns on the market to meet your needs. Our comprehensive shade range is available in top-selling brands and is ideal for multiple industries, including:

- Apparel
- Fibre optic
- Wires & cables
- Footwear
- Bedding
- Furniture
- Home furniture
- Computer contour stitching
- Leather footwear
- Sports footwear
- Protective footwear
- Safety shoes
- Walking boots
- Outdoor goods and sports equipment
- Awnings, lift slings, sail making, tie down and tents
- Military application
- Household and recreation
- Medical, health and food
- Personal protection
- Fashion accessories
- Travel and luggage
- Composites
- Automotive interiors



Coats MSC shade card can be used to select the perfect sustainable nylon thread colour. It is also suitable for non-recycled nylon thread.

As the application of Coats products may vary considerably it is the responsibility of the user to assure themselves that the product is suitable for the intended end use & meets end user requirements. This assurance includes but is not limited to dye fastness under all conditions. Coats will not accept liability for unsuitable or improper use or application of products and will not be responsible for any consequential damages caused. We make every effort to ensure continuity of shade however a slight variation in shades can occur in threads made with different raw materials and substrates including virgin and recycled fibres.


Coats threads are manufactured and quality controlled to the highest standards possible. Since the conditions of use, washing, pressing and cleaning etc. vary, the purchaser should assure themselves by preliminary tests that the dye fastness of the yarn or thread is 100% colourfast to crocking or washing under all conditions. We cannot be responsible for any consequential damages howsoever caused since the value of the thread is so disproportionate to the value of the goods into which it is stitched.




# PIONEERING A SUSTAINABLE FUTURE

Coats is pioneering a sustainable future by finding new and innovative ways to create long-term, sustainable growth. We are transforming our business, investing in new techniques and technologies, and continuously improving our polices, process and programmes in order to create a lasting positive impact, that supports businesses, people and our planet.


Let's work together to pioneer a sustainable future.




**NET ZERO**  
Coats commits to net zero by 2050. By 2030 70% of our global energy consumption will come from renewables



**SOCIAL IMPACT**  
Coats commits to making sustained progress and will develop 2030 targets for: Diversity, Equity & Inclusion, workplace health & safety, employee & community wellbeing and supplier social performance



**ECO MATERIALS**  
By 2030 all products will be made completely independently of new oil-extraction materials

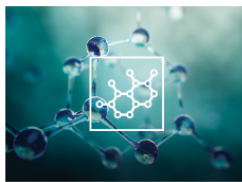


**CIRCULARITY**  
Coats will shift to circularity, creating products and packaging solutions that enable recycling and reuse, within its own operations and across the wider garment industry



## ENERGY

Reducing emissions through more efficient use of energy



## MATERIALS

Transitioning to materials with lower inherent emissions, by moving to recycled or bio-based materials



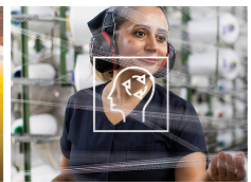
## WATER

Ensuring that we are minimising the additional water stress that we are causing



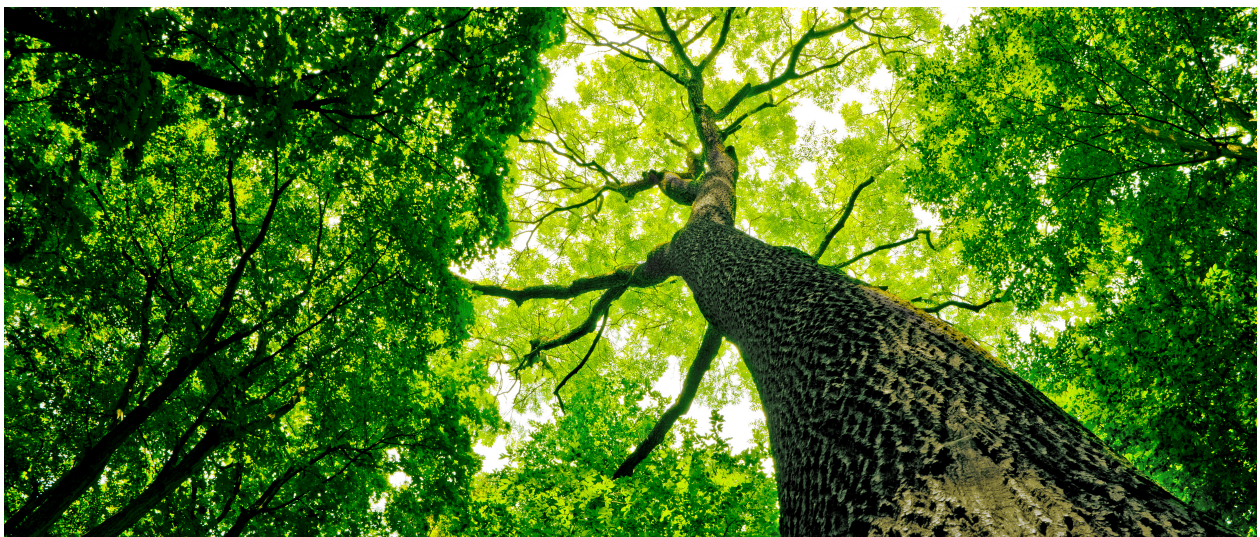
## WASTE

Ensuring that any residual waste product is dealt with responsibly



## PEOPLE

Ensure safety, wellbeing, fairness, equality, diversity and opportunity to our employees and families





# EcoVerde Master Shadecard



DO NOT PRINT

1												
	FUWHT	U1702	NATRL	H6287	E9564	001PU	U1157	E9605	D7026	Z0621	E9527	G9417
2												
	E9410	71SCQ	H0013	K2018	U1405	Z0598	18LBQ	U2255	Z2011	U1140	153AN	S2275
3												
	U1280	H7222	00038	N9702	01UBQ	0M410	E9607	U1428	D7039	Z0815	D9815	D9613
4												
	K1001	U2128	D7076	G9423	Z0554	Z1189	E9612	E7067	E9608	E7008	P2500	E6027
5												
	D7014	D6017	U2456	Z1671	U2547	K2024	G9503	Z0573	K1083	79WBQ	394PQ	Y9742
6												
	E9661	D7075	E9609	D9652	K1002	00400	U3861	M4619	U3849	31NBQ	0H883	E9619
7												
	E7040	03024	866PP	D9813	K1014	Z0525	952PQ	064AN	U3249	K1539	1022A	H7368
8												
	397PR	U3202	0H669	80WBQ	K1706	U3818	00044	03875	D7053	0044A	K0005	E6026
9												
	K0541	I0209	00107	185AN	U3136	150PR	E9537	46ACQ	K0599	183PU	E9538	H6955
10												
	U3666	579PQ	G1559	E7039	0M465	Z2044	U3373	E9522	913PR	E9616	E9615	00218
11												
	547DV	392WA	0H923	12FCQ	U3171	G9610	07625	H4733	D9680	E9614	G9678	H6966
12												
	E7011	87CZZ	U3795	G9516	G9517	740PR	K0543	Z0011	09415	K0007	Z1302	H1116

Please note this is a colour reference and should be used for guideline purposes only.  
We strongly advise against printing this shadecard, as lighting conditions and printer limitations may distort the final colour displayed.  
For a true representation of the desired shade against fabric material, a physical shadecard should be used.





# EcoVerde Master Shadecard



DO NOT PRINT

13												
	01116	U3338	E9669	H5568	G9512	U3658	Z1895	07638	0M471	Z0568	Z0012	U3858
14												
	H4238	U3980	S0538	861PP	Z0516	H2796	E6017	U8709	H6378	K3049	K1218	K0001
15												
	Z2235	H7014	H7476	E9534	E9401	Z0903	N9519	K0011	U4020	G9522	03925	G9523
16												
	916PR	E7041	00224	H6965	G9552	U4317	E9672	E9809	09735	992WA	E9620	01646
17												
	E9417	D7083	E9649	02060	H2729	U3967	G1056	Z0013	905PR	457PP	74CZZ	E9543
18												
	E9818	K2106	U7203	D6013	H7713	U7478	E9816	H7440	00070	735PR	D6003	U7443
19												
	D7057	I5951	U7308	865PP	30SZZ	U7261	185PU	U7272	M4678	E7048	K2053	Z0581
20												
	D6006	D9616	E7021	811PP	CX06L	75CZZ	U7341	D7038	00H16	G9534	954PQ	I8471
21												
	D9644	K0989	D7077	H2216	K3027	H7454	H1721	U6931	84CZZ	850PR	G1529	D9610
22												
	Z1778	M3120	73SCQ	D7002	G9538	K4008	U7595	G9545	K4007	H4770	E9639	E7056
23												
	H2807	E9817	E9405	85DCQ	E7050	N9712	K4016	U7525	K0562	G9697	09530	Z0043
24												
	157AN	H1406	U7424	911PR	K0505	K9017	D7020	N9523	E6030	62SCQ	Z1653	930TU

Please note this is a colour reference and should be used for guideline purposes only.  
We strongly advise against printing this shadecard, as lighting conditions and printer limitations may distort the final colour displayed.  
For a true representation of the desired shade against fabric material, a physical shadecard should be used.



# EcoVerde Master Shadecard



DO NOT PRINT

25												
	K3028	E7051	G9530	H7508	H6367	D7008	47QCQ	0M283	K0813	H7002	U7895	862PP
26												
	E7015	H6821	D7024	U9776	18KBQ	Z0051	Z0042	E9691	301DK	0H583	912PR	H6951
27												
	0NY68	00H12	18DZZ	U5995	E7061	D7065	Z1781	N9534	D9810	D9683	0H298	745WB
28												
	D9699	01051	910PR	E9821	G9487	63SCQ	H7233	E7004	H6819	D7015	79CZZ	D9672
29												
	59AEQ	D6009	D9651	U5120	D9647	U5590	E7038	E9636	I1352	Z0590	135AN	D9693
30												
	00199	K3046	681WB	D9606	U5350	K3013	Q3125	G9481	N9536	G0727	U8819	970WA
31												
	H7460	0M401	00202	H4489	H6662	U8220	M4613	174PU	H4283	H7229	C1474	K3045
32												
	D0638	N9708	U2288	Z0004	494PP	93041	00023	78CZZ	U8162	I7077	00876	R4054
33												
	Z0879	H5385	Z0001	0H674	01074	372PQ	N9510	H5284	02397	Z0006	H5056	Z0509
34												
	K6030	K6020	Z0603	C2326	Z0877	00950	Z1093	H7455	01831	00021	Z0002	H1171
35												
	H1967	729PR	01094	H7217	Z0007	D9641	00262	U2231	U2376	U2286	D0977	08772
36												
	E7006	G9412	G9409	Z0825	Z1161	E9646	703PR	K1426	H6719	E9647	Z0826	00207

Please note this is a colour reference and should be used for guideline purposes only.  
We strongly advise against printing this shadecard, as lighting conditions and printer limitations may distort the final colour displayed.  
For a true representation of the desired shade against fabric material, a physical shadecard should be used.





# EcoVerde Master Shadecard



DO NOT PRINT

37												
	H1070	34750	13VCQ	D9635	04186	H5487	83CZZ	K6001	K0502	U8161	H5036	Z0551
38												
	H1124	08214	Z0560	94CCQ	G9411	0021A	0H672	U8251	U2222	Z0899	E6022	Z0022
39												
	G9479	G9460	Z0027	U9091	901PR	H1246	H6974	G9407	G9691	01600	K6026	Z0015
40												
	G9569	G9563	Z0511	H1984	0M395	935WA	D7050	G9472	70DBQ	81CZZ	08931	Z0868
41												
	K3038	G9561	G9414	Z0017	Z0016	0NY54	E9570	K8011	Z0003	Z0503	U9393	E6006
42												
	E9567	S2562	00434	G9446	Z0844	Z0548	H1519	G9468	0001A	H7382	U8284	G9450
43												
	G9471	61480	06513	Z0802	Z1966	0V277	86CZZ	U8426	0M650	H7173	H7029	0U322
44												
	S2042	01149	D7041	Z0818	N9509	G9408	Z0866	U8474	H4752	H7383	Y9243	Z0019
45												
	0M353	G9458	85CZZ	H7354	H7219	00027	06265	U8756	Z0820	U9093	Z0029	Z0014
46												
	00599	U9339	0H520	00028	U2284	94UDQ	R2001	E1397	K6025	U8712	H6883	Z0009
47												
	K6009	Y0621	Z0010	Z0531	09682	Z0026	K5002	Z0520	24HCQ	K1943	K0508	D7021
48												
	Z0038	Z1435	H7242	Z0514	677PR	P8500	E9831	298XC	80CZZ	82CZZ	P6400	H6419

Please note this is a colour reference and should be used for guideline purposes only.  
We strongly advise against printing this shadecard, as lighting conditions and printer limitations may distort the final colour displayed.  
For a true representation of the desired shade against fabric material, a physical shadecard should be used.



# EcoVerde Master Shadecard



DO NOT PRINT

49												
	730PR	G9476	H7516	K3036	K1185	K8005	H7214	G9469	H4962	G9470	Z0869	G9451
	U8459	D9404	08443	03187	P7000	H7355	H4457	K6011	D6008	D9814	K1404	G9466
	U8177	Z0545	U8196	U8232	Z0832	688TQ	H6183	H4367	Z0018	911EQ	00913	887PQ
	H6361	D9676	P7733	D7072	Z0848	D7073	K6007	00222	D9427	00984	K1413	U8005
	921YJ	840DV	Q3123	K9011	944EQ	K1478	H1322	G9582	08805	E6010	K6016	K6005
	H7069	K0702	H3323	77CZZ	G9403	08223	0M331	72NBQ	737PR	020AL	872PP	K9015
	Q2577	D9636	Z0602	K1472	Z0576	Z0575	E9832	K6024	G1271	K6028	U8864	11FCQ
	U8119	G9571	0U319	U9464	D9605	R0004	907PR	H7302	K9001	G9462	G9586	Z0838
	H4813	G9581	000H5	Z1145	U9972	08965	P7800	Z0030	38JDQ	Z0831	88CZZ	D9627
	K3032	U9290	84TCQ	K1418	K1206	H7237	D9669	0H676	D9638	E7053	N9713	K9014
	K2005	K9009	U9064	S1212	M3574	477PR	749PR	K0377	E7025	U9715	K0168	46HTQ
	08209	057PQ	K0513	Z0571	V1947	R0296	K0514	K9003	U8049	K1040	K4010	76CZZ

Please note this is a colour reference and should be used for guideline purposes only.  
We strongly advise against printing this shadecard, as lighting conditions and printer limitations may distort the final colour displayed.  
For a true representation of the desired shade against fabric material, a physical shadecard should be used.





# EcoVerde Master Shadecard



DO NOT PRINT

61												
	Z0812	G1786	K2006	K0191	V9730	D7068	0M305	00730	I3007	G9578	914PR	H4646
62												
	00H17	K3023	G9592	K1144	00287	728PR	Z0803	Z0057	560PP	D6010	H7447	H7510
63												
	350PR	K1405	Q9018	Z0039	K0507	K9005	Z0837	K3031	08GDQ	Z0839	G1648	H1853
64												
	E6004	K1205	Z0047	K3035	98GCQ	H7452	0H730	823PQ	D6011	K0122	738PR	G0032
65												
	K3022	00475	H1403	H0916	0H702	N9522	Q3127	H7373	M0240	Z0052	920YJ	K4002
66												
	03LDQ	E6018	0H600	H5134	D7019	243EV	U9134	01535	964EQ	09138	Z1106	03012
67												
	E7002	G1165	U9785	09836	Z0056	D7044	35FDQ	BLACK				

Please note this is a colour reference and should be used for guideline purposes only.  
We strongly advise against printing this shadecard, as lighting conditions and printer limitations may distort the final colour displayed.  
For a true representation of the desired shade against fabric material, a physical shadecard should be used.



# Index EcoVerde Master Shadecard



ROW	CODE	PAGE	ROW	CODE	PAGE	ROW	CODE	PAGE	ROW	CODE	PAGE	ROW	CODE	PAGE
42	0001A	6	45	06265	6	24	157AN	4	60	76CZZ	7	35	D0977	5
34	00021	5	7	064AN	3	31	174PU	5	54	77CZZ	7	18	D6003	4
32	00023	5	43	06513	6	9	183PU	3	32	78CZZ	5	20	D6006	4
45	00027	6	11	07625	3	9	185AN	3	28	79CZZ	5	50	D6008	7
46	00028	6	13	07638	4	19	185PU	4	5	79WBQ	3	29	D6009	5
3	00038	3	60	08209	7	27	18DZZ	5	48	80CZZ	6	62	D6010	8
8	00044	3	38	08214	6	26	18KBQ	5	8	80WBQ	3	64	D6011	8
18	00070	4	54	08223	7	2	18LBQ	3	20	811PP	4	18	D6013	4
57	000H5	7	50	08443	7	66	243EV	8	40	81CZZ	6	5	D6017	3
9	00107	3	35	08772	5	47	24HCQ	6	64	823PQ	8	22	D7002	4
30	00199	5	53	08805	7	48	298XC	6	48	82CZZ	6	25	D7008	5
1	001PU	3	40	08931	6	26	301DK	5	37	83CZZ	6	5	D7014	3
31	00202	5	57	08965	7	19	30SZZ	4	53	840DV	7	28	D7015	5
36	00207	5	63	08GDQ	8	6	31NBQ	3	21	84CZZ	4	66	D7019	8
10	00218	3	66	09138	8	37	34750	6	58	84TCQ	7	24	D7020	4
38	0021A	6	12	09415	3	63	350PR	8	21	850PR	4	47	D7021	6
52	00222	7	23	09530	4	67	35FDQ	8	45	85CZZ	6	26	D7024	5
16	00224	4	47	09682	6	33	372PQ	5	23	85DCQ	4	1	D7026	3
35	00262	5	16	09735	4	57	38JDQ	7	14	861PP	4	20	D7038	4
62	00287	8	67	09836	8	11	392WA	3	25	862PP	5	3	D7039	3
6	00400	3	27	0H298	5	5	394PQ	3	19	865PP	4	44	D7041	6
42	00434	6	46	0H520	6	8	397PR	3	7	866PP	3	67	D7044	8
8	0044A	3	26	0H583	5	17	457PP	4	43	86CZZ	6	40	D7050	6
65	00475	8	66	0H600	8	9	46ACQ	3	54	872PP	7	8	D7053	3
46	00599	6	8	0H669	3	59	46HTQ	7	12	87CZZ	3	19	D7057	4
61	00730	8	38	0H672	6	59	477PR	7	51	887PQ	7	27	D7065	5
32	00876	5	33	0H674	5	25	47QCQ	5	57	88CZZ	7	61	D7068	8
51	00913	7	58	0H676	7	32	494PP	5	39	901PR	6	52	D7072	7
34	00950	5	65	0H702	8	11	547DV	3	17	905PR	4	52	D7073	7
52	00984	7	64	0H730	8	62	560PP	8	56	907PR	7	6	D7075	3
27	00H12	5	6	0H883	3	10	579PQ	3	28	910PR	5	4	D7076	3
20	00H16	4	11	0H923	3	29	59AEQ	5	51	911EQ	7	21	D7077	4
62	00H17	8	25	0M283	5	43	61480	6	24	911PR	4	17	D7083	4
28	01051	5	61	0M305	8	24	62SCQ	4	26	912PR	5	50	D9404	7
33	01074	5	54	0M331	7	28	63SCQ	5	10	913PR	3	52	D9427	7
35	01094	5	45	0M353	6	48	677PR	6	61	914PR	8	56	D9605	7
13	01116	4	40	0M395	6	30	681WB	5	16	916PR	4	30	D9606	5
44	01149	6	31	0M401	5	51	688TQ	7	65	920YJ	8	21	D9610	4
66	01535	8	3	0M410	3	36	703PR	5	53	921YJ	7	3	D9613	3
39	01600	6	10	0M465	3	40	70DBQ	6	32	93041	5	20	D9616	4
16	01646	4	13	0M471	4	2	71SCQ	3	24	930TU	4	57	D9627	7
34	01831	5	43	0M650	6	62	728PR	8	40	935WA	6	37	D9635	6
3	01UBQ	3	41	0NY54	6	35	729PR	5	53	944EQ	7	55	D9636	7
17	02060	4	27	0NY68	5	54	72NBQ	7	38	94CCQ	6	58	D9638	7
54	020AL	7	56	0U319	7	49	730PR	7	46	94UDQ	6	35	D9641	5
33	02397	5	43	0U322	6	18	735PR	4	7	952PQ	3	21	D9644	4
66	03012	8	43	0V277	6	54	737PR	7	20	954PQ	4	29	D9647	5
7	03024	3	7	1022A	3	64	738PR	8	66	964EQ	8	29	D9651	5
50	03187	7	55	11FCQ	7	22	73SCQ	4	30	970WA	5	6	D9652	3
8	03875	3	11	12FCQ	3	12	740PR	3	64	98GCQ	8	58	D9669	7
15	03925	4	29	135AN	5	27	745WB	5	16	992WA	4	28	D9672	5
66	03LDQ	8	37	13VCQ	6	59	749PR	7	31	C1474	5	52	D9676	7
37	04186	6	9	150PR	3	17	74CZZ	4	34	C2326	5	11	D9680	3
60	057PQ	7	2	153AN	3	20	75CZZ	4	32	D0638	5	27	D9683	5





# Index EcoVerde Master Shadecard



ROW	CODE	PAGE
29	D9693	5
28	D9699	5
27	D9810	5
7	D9813	3
50	D9814	7
3	D9815	3
46	E1397	6
64	E6004	8
41	E6006	6
53	E6010	7
14	E6017	4
66	E6018	8
38	E6022	6
8	E6026	3
4	E6027	3
24	E6030	4
67	E7002	8
28	E7004	5
36	E7006	5
4	E7008	3
12	E7011	3
26	E7015	5
20	E7021	4
59	E7025	7
29	E7038	5
10	E7039	3
7	E7040	3
16	E7041	4
19	E7048	4
23	E7050	4
25	E7051	5
58	E7053	7
22	E7056	4
27	E7061	5
4	E7067	3
15	E9401	4
23	E9405	4
2	E9410	3
17	E9417	4
10	E9522	3
1	E9527	3
15	E9534	4
9	E9537	3
9	E9538	3
17	E9543	4
1	E9564	3
42	E9567	6
41	E9570	6
1	E9605	3
3	E9607	3
4	E9608	3
6	E9609	3
4	E9612	3
11	E9614	3

ROW	CODE	PAGE
10	E9615	3
10	E9616	3
6	E9619	3
16	E9620	4
29	E9636	5
22	E9639	4
36	E9646	5
36	E9647	5
17	E9649	4
6	E9661	3
13	E9669	4
16	E9672	4
26	E9691	5
16	E9809	4
18	E9816	4
23	E9817	4
18	E9818	4
28	E9821	5
48	E9831	6
55	E9832	7
64	G0032	8
30	G0727	5
17	G1056	4
67	G1165	8
55	G1271	7
21	G1529	4
10	G1559	3
63	G1648	8
61	G1786	8
54	G9403	7
39	G9407	6
44	G9408	6
36	G9409	5
38	G9411	6
36	G9412	5
41	G9414	6
1	G9417	3
4	G9423	3
42	G9446	6
42	G9450	6
49	G9451	7
45	G9458	6
39	G9460	6
56	G9462	7
50	G9466	7
42	G9468	6
49	G9469	7
49	G9470	7
43	G9471	6
40	G9472	6
49	G9476	7
39	G9479	6
30	G9481	5
28	G9487	5

ROW	CODE	PAGE
5	G9503	3
13	G9512	4
12	G9516	3
12	G9517	3
15	G9522	4
15	G9523	4
25	G9530	5
20	G9534	4
22	G9538	4
22	G9545	4
16	G9552	4
41	G9561	6
40	G9563	6
40	G9569	6
56	G9571	7
61	G9578	8
57	G9581	7
53	G9582	7
56	G9586	7
62	G9592	8
11	G9610	3
11	G9678	3
39	G9691	6
23	G9697	4
2	H0013	3
65	H0916	8
37	H1070	6
12	H1116	3
38	H1124	6
34	H1171	5
39	H1246	6
53	H1322	7
65	H1403	8
24	H1406	4
42	H1519	6
21	H1721	4
63	H1853	8
35	H1967	5
40	H1984	6
21	H2216	4
17	H2729	4
14	H2796	4
23	H2807	4
54	H3323	7
14	H4238	4
31	H4283	5
51	H4367	7
50	H4457	7
31	H4489	5
61	H4646	8
11	H4733	3
44	H4752	6
22	H4770	4
57	H4813	7

ROW	CODE	PAGE
49	H4962	7
37	H5036	6
33	H5056	5
66	H5134	8
33	H5284	5
33	H5385	5
37	H5487	6
13	H5568	4
51	H6183	7
1	H6287	3
52	H6361	7
25	H6367	5
14	H6378	4
48	H6419	6
31	H6662	5
36	H6719	5
28	H6819	5
26	H6821	5
46	H6883	6
26	H6951	5
9	H6955	3
16	H6965	4
11	H6966	3
39	H6974	6
25	H7002	5
15	H7014	4
43	H7029	6
54	H7069	7
43	H7173	6
49	H7214	7
35	H7217	5
45	H7219	6
3	H7222	3
31	H7229	5
28	H7233	5
58	H7237	7
48	H7242	6
56	H7302	7
45	H7354	6
50	H7355	7
7	H7368	3
65	H7373	8
42	H7382	6
44	H7383	6
18	H7440	4
62	H7447	8
64	H7452	8
21	H7454	4
34	H7455	5
31	H7460	5
15	H7476	4
25	H7508	5
62	H7510	8
49	H7516	7

ROW	CODE	PAGE
18	H7713	4
9	I0209	3
29	I1352	5
61	I3007	8
19	I5951	4
32	I7077	5
20	I8471	4
14	K0001	4
8	K0005	3
12	K0007	3
15	K0011	4
64	K0122	8
59	K0168	7
61	K0191	8
59	K0377	7
37	K0502	6
24	K0505	4
63	K0507	8
47	K0508	6
60	K0513	7
60	K0514	7
9	K0541	3
12	K0543	3
23	K0562	4
9	K0599	3
54	K0702	7
25	K0813	5
21	K0989	4
4	K1001	3
6	K1002	3
7	K1014	3
60	K1040	7
5	K1083	3
62	K1144	8
49	K1185	7
64	K1205	8
58	K1206	7
14	K1218	4
50	K1404	7
63	K1405	8
52	K1413	7
58	K1418	7
36	K1426	5
55	K1472	7
53	K1478	7
7	K1539	3
8	K1706	3
47	K1943	6
59	K2005	7
61	K2006	8
2	K2018	3
5	K2024	3
19	K2053	4
18	K2106	4



# Index EcoVerde Master Shadecard



ROW	CODE	PAGE	ROW	CODE	PAGE	ROW	CODE	PAGE	ROW	CODE	PAGE	ROW	CODE	PAGE
30	K3013	5	3	N9702	3	14	U3980	4	5	Y9742	3	34	Z0603	5
65	K3022	8	32	N9708	5	15	U4020	4	33	Z0001	5	1	Z0621	3
62	K3023	8	23	N9712	4	16	U4317	4	34	Z0002	5	43	Z0802	6
21	K3027	4	58	N9713	7	29	U5120	5	41	Z0003	6	62	Z0803	8
25	K3028	5	4	P2500	3	30	U5350	5	32	Z0004	5	61	Z0812	8
63	K3031	8	48	P6400	6	29	U5590	5	33	Z0006	5	3	Z0815	3
58	K3032	7	50	P7000	7	27	U5995	5	35	Z0007	5	44	Z0818	6
64	K3035	8	52	P7733	7	21	U6931	4	46	Z0009	6	45	Z0820	6
49	K3036	7	57	P7800	7	18	U7203	4	47	Z0010	6	36	Z0825	5
41	K3038	6	48	P8500	6	19	U7261	4	12	Z0011	3	36	Z0826	5
31	K3045	5	55	Q2577	7	19	U7272	4	13	Z0012	4	57	Z0831	7
30	K3046	5	53	Q3123	7	19	U7308	4	17	Z0013	4	51	Z0832	7
14	K3049	4	30	Q3125	5	20	U7341	4	45	Z0014	6	63	Z0837	8
65	K4002	8	65	Q3127	8	24	U7424	4	39	Z0015	6	56	Z0838	7
22	K4007	4	63	Q9018	8	18	U7443	4	41	Z0016	6	63	Z0839	8
22	K4008	4	56	R0004	7	18	U7478	4	41	Z0017	6	42	Z0844	6
60	K4010	7	60	R0296	7	23	U7525	4	51	Z0018	7	52	Z0848	7
23	K4016	4	46	R2001	6	22	U7595	4	44	Z0019	6	44	Z0866	6
47	K5002	6	32	R4054	5	25	U7895	5	38	Z0022	6	40	Z0868	6
37	K6001	6	14	S0538	4	52	U8005	7	47	Z0026	6	49	Z0869	7
53	K6005	7	59	S1212	7	60	U8049	7	39	Z0027	6	34	Z0877	5
52	K6007	7	44	S2042	6	56	U8119	7	45	Z0029	6	33	Z0879	5
47	K6009	6	2	S2275	3	37	U8161	6	57	Z0030	7	38	Z0899	6
50	K6011	7	42	S2562	6	32	U8162	5	48	Z0038	6	15	Z0903	4
53	K6016	7	2	U1140	3	51	U8177	7	63	Z0039	8	34	Z1093	5
34	K6020	5	1	U1157	3	51	U8196	7	26	Z0042	5	66	Z1106	8
55	K6024	7	3	U1280	3	31	U8220	5	23	Z0043	4	57	Z1145	7
46	K6025	6	2	U1405	3	51	U8232	7	64	Z0047	8	36	Z1161	5
39	K6026	6	3	U1428	3	38	U8251	6	26	Z0051	5	4	Z1189	3
55	K6028	7	1	U1702	3	42	U8284	6	65	Z0052	8	12	Z1302	3
34	K6030	5	4	U2128	3	43	U8426	6	67	Z0056	8	48	Z1435	6
49	K8005	7	38	U2222	6	50	U8459	7	62	Z0057	8	24	Z1653	4
41	K8011	6	35	U2231	5	44	U8474	6	41	Z0503	6	5	Z1671	3
56	K9001	7	2	U2255	3	14	U8709	4	33	Z0509	5	22	Z1778	4
60	K9003	7	46	U2284	6	46	U8712	6	40	Z0511	6	27	Z1781	5
63	K9005	8	35	U2286	5	45	U8756	6	48	Z0514	6	13	Z1895	4
59	K9009	7	32	U2288	5	30	U8819	5	14	Z0516	4	43	Z1966	6
53	K9011	7	35	U2376	5	55	U8864	7	47	Z0520	6	2	Z2011	3
58	K9014	7	5	U2456	3	59	U9064	7	7	Z0525	3	10	Z2044	3
54	K9015	7	5	U2547	3	39	U9091	6	47	Z0531	6	15	Z2235	4
24	K9017	4	9	U3136	3	45	U9093	6	51	Z0545	7	20	CX06L	4
65	M0240	8	11	U3171	3	66	U9134	8	42	Z0548	6	67	BLACK	8
22	M3120	4	8	U3202	3	58	U9290	7	37	Z0551	6	1	FUWHT	3
59	M3574	7	7	U3249	3	46	U9339	6	4	Z0554	3	1	NATRL	3
31	M4613	5	13	U3338	4	41	U9393	6	38	Z0560	6			
6	M4619	3	10	U3373	3	56	U9464	7	13	Z0568	4			
19	M4678	4	13	U3658	4	59	U9715	7	60	Z0571	7			
44	N9509	6	10	U3666	3	26	U9776	5	5	Z0573	3			
33	N9510	5	12	U3795	3	67	U9785	8	55	Z0575	7			
15	N9519	4	8	U3818	3	57	U9972	7	55	Z0576	7			
65	N9522	8	6	U3849	3	60	V1947	7	19	Z0581	4			
24	N9523	4	13	U3858	4	61	V9730	8	29	Z0590	5			
27	N9534	5	6	U3861	3	47	Y0621	6	2	Z0598	3			
30	N9536	5	17	U3967	4	44	Y9243	6	55	Z0602	7			