

ecoVerde

# GLOBAL COLOUR BOOK



CC-SCGCB115423  
JANUARY 2024

CONNECTING. PIONEERING. TRUSTED.



# WHO WE ARE

Coats is a brand and organisation where heritage meets innovation. Our purpose is to harness talent and technology in a way that benefits our customers, our people and the communities in which we operate. It's about more than just thread.

At home in some 50 countries, Coats has a workforce of over 18,000 staff across six continents. Headquartered in the UK, Coats is a FTSE 250 company, a constituent of the FTSE4Good UK Index and a participant in the UN Global Compact.

Our pioneering approach and innovative culture are what set us apart from our competitors. We are trusted to provide products, services and software solutions that add value to the Apparel and Footwear industries. Our innovation has enabled us to develop high technology Performance Materials threads, yarns and fabrics in areas such as automotive, composites, fibre optics and oil and gas.

# SEWING THREADS

The Global Colour Book is your ultimate colour selection tool for your favourite apparel threads, which are available anywhere in the world. The extensive range of 1154 shades is chosen from our global library of best-selling colours across all garment segments. From fine tailoring to denim; from sports and activewear to high street fashion, we have the thread colours you need.

Coats Global Colour Book can be used to select the perfect sustainable thread colour for Epic EcoVerde, Astra EcoVerde, Gramax EcoVerde, Gral EcoVerde, Dual Duty EcoVerde, Seamsoft EcoVerde, Epic SMX EcoVerde, Eloflex EcoVerde and Sylko EcoVerde Matt. It is also suitable for non recycled thread brands Astra, Epic, Epic SMX, Eloflex, Dual Duty, Gramax, Seamsoft, Sylko Matt and Gral.

Coats Epic Eco-B and Gramax Eco-B is a recycled polyester thread incorporating an additive from CiCLO® to reduce synthetic fibre accumulation in landfills and oceans. The technology creates biodegradable 'spots' in the polymer matrix, where naturally occurring microbes in certain environments can break down the plastics just as they do with natural fibres.



As the application of Coats products may vary considerably it is the responsibility of the user to assure themselves that the product is suitable for the intended end use and meets end user requirements.

This assurance includes but is not limited to dye fastness under all conditions. Coats will not accept liability for unsuitable or improper use or application of products and will not be responsible for any consequential damages caused.

**We make every effort to ensure continuity of shade however a slight variation in shades can occur in threads made with different raw materials and substrates including virgin and recycled fibres.** Please note, that since this shade card is produced with recycled polyester thread, the shades supplied may be slightly brighter in chroma for virgin fibre.

Coats threads are manufactured and quality controlled to the highest standards possible. Since the conditions of use, washing, pressing and cleaning etc. vary, the purchaser should assure themselves by preliminary tests that the dye fastness of the yarn or thread is 100% colourfast to crocking or washing under all conditions.

We cannot be responsible for any consequential damages howsoever caused since the value of the thread is so disproportionate to the value of the goods into which it is stitched.

\* **For Dual Duty, please note that these shades are dyed with reactive dyes to achieve the chroma which is not resistant to any bleaching treatments.**

**In addition, the cotton wrap in Dual Duty is dyed with a different dye type compared to the dyestuff used for the physical thread tassel.**

\* **For high wash and Denim sewing thread, please note that these shades are dyed with a special selection of disperse dyes compared to the dyestuffs used for the physical thread tassel.**

**It is recommended to review the colour against the shade card thread tassel under the required light source as metamerism may occur due to the different dyes used.**

Coats is a registered trademark of J&P Coats Ltd. EcoVerde, Epic, Astra, Gramax, Gral, Dual Duty, Seamsoft, Eloflex, Sylko and Eco-B are trademarks of J&P Coats Ltd.

# PIONEERING A SUSTAINABLE FUTURE

Coats is pioneering a sustainable future by finding new and innovative ways to create long-term, sustainable growth.

We are transforming our business, investing in new techniques and technologies, and continuously improving our policies, process and programmes in order to create a lasting positive impact, that supports businesses, people and our planet.

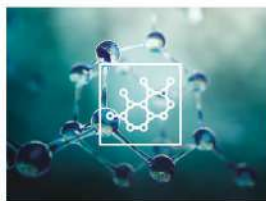
Let's work together to pioneer a sustainable future.

 <p><b>NET ZERO</b> Coats commits to net zero by 2050. By 2030 70% of our global energy consumption will come from renewables</p>	 <p><b>SOCIAL IMPACT</b> Coats commits to making sustained progress and will develop 2030 targets for: Diversity, Equity &amp; Inclusion, workplace health &amp; safety, employee &amp; community wellbeing and supplier social performance</p>	 <p><b>ECO MATERIALS</b> By 2030 all products will be made completely independently of new oil-extraction materials</p>	 <p><b>CIRCULARITY</b> Coats will shift to circularity, creating products and packaging solutions that enable recycling and reuse, within its own operations and across the wider garment industry</p>
--	--	---	---



## ENERGY

Reducing emissions through more efficient use of energy



## MATERIALS

Transitioning to materials with lower inherent emissions, by moving to recycled or bio-based materials



## WATER

Ensuring that we are minimising the additional water stress that we are causing



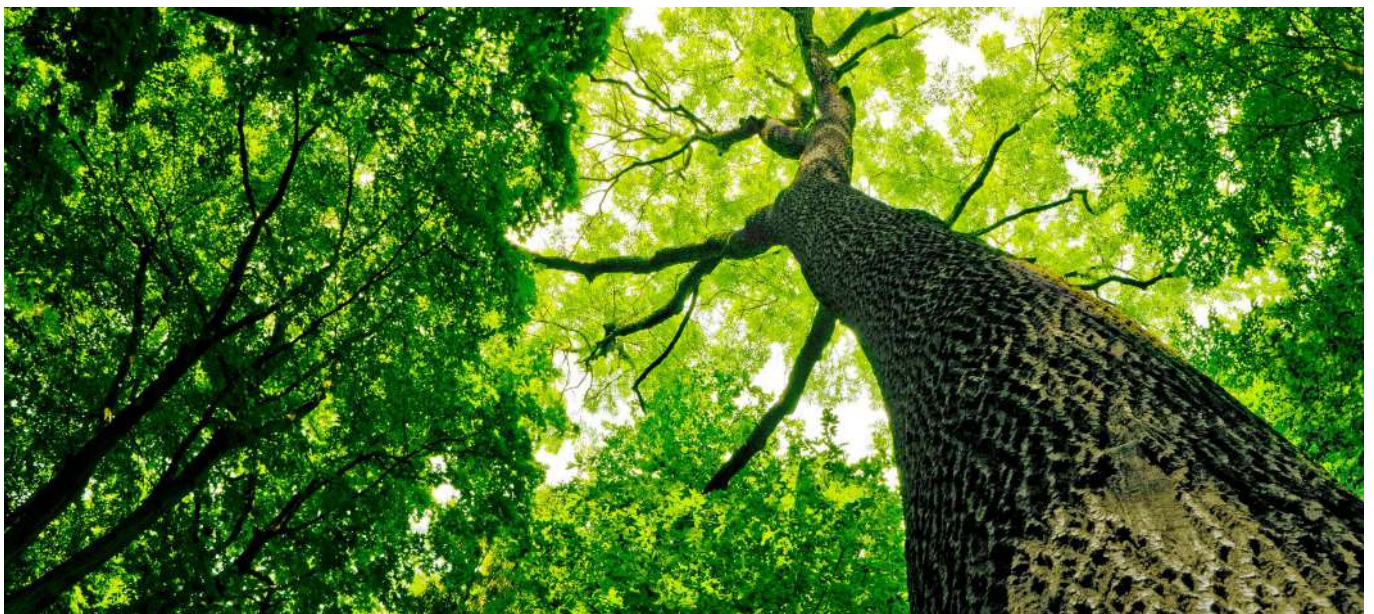
## WASTE

Ensuring that any residual waste product is dealt with responsibly



## PEOPLE

Ensure safety, wellbeing, fairness, equality, diversity and opportunity to our employees and families







# EcoVerde Global Colour Book

DO NOT PRINT

1												
	NATRL	C1740	C1750	C1711	C1712	C1730	C2712	C8261	C8154	C2740	C8158	C1123
2												
	C1109	C1103	C1139	C1142	C1162	C1168	C1166	C1382	C1231	C1257	C0122	C1359
3												
	C1355	C0380	C1367	C1322	C1401	C1268	C1429	C1421	C1262	C1278	C1281*	C1424
4												
	C1414	C1283*	C1226	C1229	C1227*	C1277	C0129*	C1295*	C1172	C1185*	C1202*	C1187
5												
	C1433	C1304	C1458	C1113	C8169	C8137	C8133	C8135	C8228	C8178	C8116	C8186
6												
	C8101	C8167	C8125	C8176	C1311	C1454	C8325	C8323	C8518	C0054	C2371	C2374
7												
	C1452	C1470	C1555	C1474	C2368	C2357	C2372	C2317	C2318	C2380	C2369	C2373
8												
	C2325	C0653	C0270	C0512	C0275	C1404	C1407	C2353	C2356	C2315	C2306	C0016
9												
	C2305	C2352	C8806	C2384	C2336	C2335	C2333	C0363	C0970	C1400*	C8770	C8762
10												
	C8781	C2386	C2398	C2390	C2313	C2309	C0241	C2338	C0067	C2301	C2314	C2324
11												
	C8625	C2332	C2326	C8521	C0998	C8774	C8628	C1336	C8357	C8354	C8353	C9199
12												
	C8202	C8114	C8145	C8250	C8356	C8379	C8381	C8380	C8319	C8322	C8640	C8392

Please note this is a colour reference and should be used for guideline purposes only.  
 We strongly advise against printing this shadecard, as lighting conditions and printer limitations may distort the final colour displayed.  
 For a true representation of the desired shade against fabric material, a physical shadecard should be used.



# EcoVerde Global Colour Book

DO NOT PRINT

13												
	C8645	C8634	C8349	C8368	C8638	C8538	C8599	C8639	C8669	C8668	C8667	C8361
14												
	C8657	C8526	C0538	C8601	C8660	C8658	C8501	C8520	C6830	C8779	C8524	C8627
15												
	C8624	C7020	C8776	C8587	C8786	C8918	C8592	C8688	C8377	C8109	C0839	C8184
16												
	C8149	C8203	C8316	C8308	C2152	C8800	C0050	C2138	C8752	C8449	C8859	C8736
17												
	C0051	C8452	C8370	C8726	C8863	C0996	C8758	C0394	C2131	C3945	C8716	C2402
18												
	C8749	C3237	C2113	C5810	C2451	C2457	C2130	C2478	C2479	C2120	C2410	C2414
19												
	C2459	C2385	C3814	C2610	C2427	C2429	C2437	C2446	C2257	C2226	C2236	C0222
20												
	C0537	C2240	C2223	C0196	C2232*	C8702	C2202	C0206	C0870	C8707	C7107	C3188
21												
	C3244	C3258	C0317	C3184	C3185	C0014	C3194	C3391	C2874	C2161	C3231	C2290
22												
	C2293	C3426	C0008	C1970*	C4820*	C0141*	C4488*	C5105	C3459*	C3291	C2329	C0335
23												
	C3357	C3860*	C3862*	C4812	C3867	C3890*	C3808*	C3885*	C4816	C4817	C3899*	C3828*
24												
	C3798	C3838*	C3826*	C3822*	C3853*	C3781*	C3785*	C3780*	C3880*	C3991	C3807*	C0428*

Please note this is a colour reference and should be used for guideline purposes only.  
 We strongly advise against printing this shadecard, as lighting conditions and printer limitations may distort the final colour displayed.  
 For a true representation of the desired shade against fabric material, a physical shadecard should be used.



# EcoVerde Global Colour Book

DO NOT PRINT

25												
	C3870*	C3990	C0388	C3968	C3959*	C3961*	C3993	C3966	C0417	C3958	C3975	C3971
26												
	C3974	C3983	C3948	C3952	C3941	C3950*	C3940	C3930	C3954	C3927	C4920	C5939
27												
	C3929	C3926	C3943	C3924	C3902	C6912	C3901	C3915	C3935*	C4911	C3931*	C8924
28												
	C0391	C8834	C0898	C8864	C4363	C0053	C4183	C3149	C3173	C3115	C2080	C4144
29												
	C3113*	C3166*	C3223	C1312	C3125	C4652	C4642	C3646*	C4665*	C3676*	C4460*	C3664
30												
	C4659*	C3673*	C4697*	C3717*	C3835*	C3638*	C3878*	C3715*	C6328	C4388	C0314	
31												
	C3156	C3182	C4392	C1102	C3101	C3325	C0002	C0837	C3332	C1330	C3307	C4379
32												
	C4396	C9774	C4943	C1170	C4940	C3361	C3365	C3374	C3600*	C3604*	C3619*	C0361*
33												
	C4354*	C5803	C5391*	C4333*	C4377	C5384	C3368	C4386	C4375*	C4382*	C4344	C4366*
34												
	C4908	C4926	C4351*	C4157*	C4266*	C4156	C4121	C6125	C4178	C4106	C4105*	C4331
35												
	C5327*	C4328*	C5334	C4695	C4684	C4638	C4324	C4649	C4300	C5989*	C5951	C4983
36												
	C4939	C4919	C4912	C4935	C4987	C4668	C4663	C0493	C4998	C4931	C7921	C9215

Please note this is a colour reference and should be used for guideline purposes only.  
 We strongly advise against printing this shadecard, as lighting conditions and printer limitations may distort the final colour displayed.  
 For a true representation of the desired shade against fabric material, a physical shadecard should be used.



# EcoVerde Global Colour Book

DO NOT PRINT

37												
	C7262	C7157*	C7151	C7163	C7145	C7194	C7274	C0088	C7279	C7177	C7143*	C7244
38												
	C7221	C7232*	C7136*	C7204	C7114	C7142	C1156*	C7156	C7253	C7215	C1390*	C0711
39												
	C7211	C7350	C7347	C7383	C9849	C7618	C9548	C7581	C7551	C7553	C7521	C7519
40												
	C7524	C7560	C7517	C7928	C7533	C7532	C7563	C7589	C7586	C7594	C7357	C7335*
41												
	C7329*	C7313*	C7310*	C7314	C7389*	C7309*	C7305*	C7331*	C7326*	C7382	C7318*	C7324*
42												
	C7316	C7315	C7284*	C4965*	C7439	C7361	C7330	C7908	C7225	C7266	C7167	C7295
43												
	C7276	C7269	C7197	C7289	C7172	C1714	C7207	C0713*	C7152	C7109	C7212	C7398
44												
	C7349	C7381	C7201	C7497	C7396	C7579	C7540	C7343	C7388	C7395	C7110	C7580
45												
	C7549	C7565	C7281	C7170	C6310	C0717	C7234*	C6905	C7453	C0734	C6168	C7456*
46												
	C7473*	C2431	C7379	C7380	C7354	C7366*	C7342*	C7582	C7375*	C7472*	C7370*	C0736*
47												
	C7369*	C7442	C7608	C7385*	C7327*	C7336	C7368	C7564	C7598	C7996	C7985	C7982
48												
	C7916	C7988	C7949	C0794	C0579	C7699	C1511	C5935	C7529	C7970	C7917	C7956

Please note this is a colour reference and should be used for guideline purposes only.  
 We strongly advise against printing this shadecard, as lighting conditions and printer limitations may distort the final colour displayed.  
 For a true representation of the desired shade against fabric material, a physical shadecard should be used.



# EcoVerde Global Colour Book

DO NOT PRINT

49												
	C7944	C7932	C7930	C7939	C7919	C7900	C7941	C7927	C7929	C7969	C7960	C7967
50												
	C7977	C7915	C7978	C7981	C7991	C7100	C7555	C7141	C7544	C7118	C7548	C1754
51												
	C7545	C7512	C7514	C0584	C7656	C7542	C7503	C7940	C7952	C7976	C7999	C7980
52												
	C7998	C7994	C7979	C7975	C7587	C7957	C7959	C7953	C7955	C7933	C7903	C9913
53												
	C9902	C7904	C7907	C6936	C0639	C9338	C6992	C6377	C7298	C6409	C6902	C6342
54												
	C6913*	C6104*	C6924*	C6130*	C6982	C6934*	C1699*	C6995*	C0631*	C6911*	C6103*	C6315*
55												
	C6136*	C6973*	C7083*	C6656	C7689	C6659	C6654	C6952	C6958	C5981	C6607	C6954
56												
	C6610	C6605	C5918	C5993	C9664	C5920	C5976	C7364*	C0637	C6389*	C6173	C6178
57												
	C7642	C6638*	C7669*	C6126	C6645	C0667	C6668	C5208	C6677	C6629	C6613	C6619
58												
	C5900	C5991	C5980	C5938	C5953	C5968	C5936	C5915	C5969	C5985	C5941	C5943
59												
	C5942	C5937	C9900	C6156	C5153	C6390	C6386	C6388	C6117	C5164	C5169	C5189
60												
	C0514	C5140	C6175	C5188	C5172	C5209	C5198	C1519	C5195	C6358	C5165	C5171

Please note this is a colour reference and should be used for guideline purposes only.  
 We strongly advise against printing this shadecard, as lighting conditions and printer limitations may distort the final colour displayed.  
 For a true representation of the desired shade against fabric material, a physical shadecard should be used.





# EcoVerde Global Colour Book

DO NOT PRINT

61												
	C5207	C5204	C5122	C0075	C5222	C6122	C5149	C5131	C6123	C5223	C6133	C5190
62												
	C5229	C5104	C6128	C5203	C5205	C5213	C5200	C5964	C5999	C5958	C0595	C5956
63												
	C9602	C9601	C6990	C7475	C9640	C5547	C3301	C5546	C8213	C5502	C1556	C5621
64												
	C5500	C5566	C5539	C0554	C5541	C5544	C9583	C9455	C5571	C5361	C5363	C5341
65												
	C5366*	C5368	C5340	C5342	C5362	C5478	C5393	C6138	C5167	C5358*	C1100	C5375*
66												
	C5352	C0550	C5355	C5345	C5349	C5990	C2010	C5312	C1489	C5770	C5309	C0532
67												
	C5324	C5337	C5595	C5706	C5717	C5724	C5903	C5525	C9519	C5761	C6767	C0235
68												
	C5743	C5745	C5765	C0590	C5763	C5748	C5127	C5535	C5533	C5561	C9680	C9377
69												
	C5527	C9606	C9592	C9697	C6727	C5906	C5930	C9987	C9698	C5711	C5927	C9918
70												
	C5987	C9600	C5984	C9588	C9971	C5884	C2033	C0594	C1985	C9975	C9999	C5983
71												
	C5946	C8946	C8950	C8947	C8948	C9923	C5798	C5923	C5744	C5742	C5909	C5708
72												
	C8604	C5713	C5710	C5715	C5726	C8654	C5722	C8687	C9643	C5721	C5727	C8941

Please note this is a colour reference and should be used for guideline purposes only.  
 We strongly advise against printing this shadecard, as lighting conditions and printer limitations may distort the final colour displayed.  
 For a true representation of the desired shade against fabric material, a physical shadecard should be used.



# EcoVerde Global Colour Book

DO NOT PRINT

73												
	C8982	C8973	C8510	C8515	C8609	C9444	C8678	C8682	C8683	C8612	C5768	C8664
74												
	C8925	C8692	C5775	C8930	C5904	C5908	C8182	C8173	C8171	C8136	C8264	C8174
75												
	C8130	C8172	C9173	C8107	C8119	C8111	C8106	C9316	C8344	C8345	C9354	C8331
76												
	C9304	C8140	C0234	C8417	C8334	C8362	C8363	C8630	C9326	C9398	C9611	C9311
77												
	C9612	C8677	C8674	C8530	C8629	C9613	C8611	C8336	C9614	C8602	C8506	C8671
78												
	C0506	C0328	C9884	C9553	C0338	C8650	C8699	C8686	C8810	C8649	C8694	C8680
79												
	C8696	C8655	C8652	C8685	C8888	C8991	C8894	C8978	C8970	C8905	C8999	C8989
80												
	C8939	C8929	C8979	C0228	C8897	C8775	C8986	C8938	C8985	C8656	C8933	C8940
81												
	C8955	C8956	C8963	C8966	C8937	C8953	C8996	C8305	C8348	C8328	C8326	C8347
82												
	C8399	C8397	C8396	C8156	C9117	C8112	C9187	C8343	C9325	C9171	C9176	C9156
83												
	C9153	C9125	C9294	C9522	C9218	C9249	C0715	C9310	C8517	C8663	C8665	C8614
84												
	C8603	C8597	C8606	C8534	C8384	C8383	C8300	C8337	C8631	C8593	C8382	C8391

Please note this is a colour reference and should be used for guideline purposes only.  
 We strongly advise against printing this shadecard, as lighting conditions and printer limitations may distort the final colour displayed.  
 For a true representation of the desired shade against fabric material, a physical shadecard should be used.



# EcoVerde Global Colour Book

DO NOT PRINT

85												
	C9309	C8360	C8304	C8607	C8598	C8676	C8570	C8605	C8636	C8659	C8569	C5784
86												
	C8113	C8241	C8389	C0293	C8248	C9122	C9189	C9170	C9167	C9166	C9164	C9335
87												
	C9505	C9178	C9332	C9308	C9313	C8679	C8815	C8684	C9353	C9374	C9393	C9524
88												
	C9501	C9373	C9655	C9491	C9657	C9667	C9718	C9870	C9665	C9388	C9675	C9678
89												
	C9959	C9616	C9652	C9114	C9131	C9142	C9404	C9383	C9424	C9363	C9633	C9623
90												
	C9671	C9625	C9662	C9121	C9140	C9348	C9590	C9370	C9394	C9628	C9631	C9372
91												
	C9375	C9392	C9376	C9537	C9782	C9656	C9387	C9835	C0966	C9676	C9684	C9630
92												
	C9627	C9493	C9686	C9694	C9666	C9911	C9962	C9949	C0999	C0982	C0993	C9920
93												
	C9967	C9681	C9792	C9995	C9998	C9993	C9961	C0414	C9981	C9979	C9954	C9952
94												
	C9945	C9905	C9948	C7912	C9710	C9700	C9770	C9760	C9750	C9863	C9877	C1190
95												
	C0274	C0309	C0097	C9969	C9970	C9824	C9853	C9984	C9939	C9936	08ANT	09ANT
96												
	13ANT	15ANT	17ANT	121ZR	69ANT	75ANT	55ANT	72ANT	122ZR	44ANT	41ANT	30ANT
97												
	513YQ*	39ANT										

Please note this is a colour reference and should be used for guideline purposes only.  
 We strongly advise against printing this shadecard, as lighting conditions and printer limitations may distort the final colour displayed.  
 For a true representation of the desired shade against fabric material, a physical shadecard should be used.



# Index

## EcoVerde Global Colour Book



CODE	PAGE	ROW	CODE	PAGE	ROW	CODE	PAGE	ROW	CODE	PAGE	ROW	CODE	PAGE	ROW	CODE	PAGE	ROW	CODE	PAGE	ROW			
C0002	5	31	C0595	8	62	C1304	3	5	C2236	4	19	C2740	3	1	C3835*	5	30	C4331	5	34	C5153	7	59
C0008	4	22	C0631*	7	54	C1311	3	6	C2240	4	20	C2874	4	21	C3838*	4	24	C4333*	5	33	C5164	7	59
C0014	4	21	C0637	7	56	C1312	5	29	C2257	4	19	C3101	5	31	C3853*	4	24	C4344	5	33	C5165	7	60
C0016	3	8	C0639	7	53	C1322	3	3	C2290	4	21	C3113*	5	29	C3860*	4	23	C4351*	5	34	C5167	8	65
C0050	4	16	C0653	3	8	C1330	5	31	C2293	4	22	C3115	5	28	C3862*	4	23	C4354*	5	33	C5169	7	59
C0051	4	17	C0667	7	57	C1336	3	11	C2301	3	10	C3125	5	29	C3867	4	23	C4363	5	28	C5171	7	60
C0053	5	28	C0711	6	38	C1355	3	3	C2305	3	9	C3149	5	28	C3870*	5	25	C4366*	5	33	C5172	7	60
C0054	3	6	C0713*	6	43	C1359	3	2	C2306	3	8	C3156	5	31	C3878*	5	30	C4375*	5	33	C5188	7	60
C0067	3	10	C0715	9	83	C1367	3	3	C2309	3	10	C3166*	5	29	C3880*	4	24	C4377	5	33	C5189	7	59
C0075	8	61	C0717	6	45	C1382	3	2	C2313	3	10	C3173	5	28	C3885*	4	23	C4379	5	31	C5190	8	61
C0088	6	37	C0734	6	45	C1390*	6	38	C2314	3	10	C3182	5	31	C3890*	4	23	C4382*	5	33	C5195	7	60
C0097	10	95	C0736*	6	46	C1400*	3	9	C2315	3	8	C3184	4	21	C3899*	4	23	C4386	5	33	C5198	7	60
C0122	3	2	C0794	6	48	C1401	3	3	C2317	3	7	C3185	4	21	C3901	5	27	C4388	5	30	C5200	8	62
C0129*	3	4	C0837	5	31	C1404	3	8	C2318	3	7	C3188	4	20	C3902	5	27	C4392	5	31	C5203	8	62
C0141*	4	22	C0839	4	15	C1407	3	8	C2324	3	10	C3194	4	21	C3915	5	27	C4396	5	32	C5204	8	61
C0196	4	20	C0870	4	20	C1414	3	4	C2325	3	8	C3223	5	29	C3924	5	27	C4460*	5	29	C5205	8	62
C0206	4	20	C0898	5	28	C1421	3	3	C2326	3	11	C3231	4	21	C3926	5	27	C4488*	4	22	C5207	8	61
C0222	4	19	C0966	10	91	C1424	3	3	C2329	4	22	C3237	4	18	C3927	5	26	C4638	5	35	C5208	7	57
C0228	9	80	C0970	3	9	C1429	3	3	C2332	3	11	C3244	4	21	C3929	5	27	C4642	5	29	C5209	7	60
C0234	9	76	C0982	10	92	C1433	3	5	C2333	3	9	C3258	4	21	C3930	5	26	C4649	5	35	C5213	8	62
C0235	8	67	C0993	10	92	C1452	3	7	C2335	3	9	C3291	4	22	C3931*	5	27	C4652	5	29	C5222	8	61
C0241	3	10	C0996	4	17	C1454	3	6	C2336	3	9	C3301	8	63	C3935*	5	27	C4659*	5	30	C5223	8	61
C0270	3	8	C0998	3	11	C1458	3	5	C2338	3	10	C3307	5	31	C3940	5	26	C4663	5	36	C5229	8	62
C0274	10	95	C0999	10	92	C1470	3	7	C2352	3	9	C3325	5	31	C3941	5	26	C4665*	5	29	C5309	8	66
C0275	3	8	C1100	8	65	C1474	3	7	C2353	3	8	C3332	5	31	C3943	5	27	C4668	5	36	C5312	8	66
C0293	10	86	C1102	5	31	C1489	8	66	C2356	3	8	C3357	4	23	C3945	4	17	C4684	5	35	C5324	8	67
C0309	10	95	C1103	3	2	C1511	6	48	C2357	3	7	C3361	5	32	C3948	5	26	C4695	5	35	C5327*	5	35
C0314	5	30	C1109	3	2	C1519	7	60	C2368	3	7	C3365	5	32	C3950*	5	26	C4697*	5	30	C5334	5	35
C0317	4	21	C1113	3	5	C1555	3	7	C2369	3	7	C3368	5	33	C3952	5	26	C4812	4	23	C5337	8	67
C0328	9	78	C1123	3	1	C1556	8	63	C2371	3	6	C3374	5	32	C3954	5	26	C4816	4	23	C5340	8	65
C0335	4	22	C1139	3	2	C1699*	7	54	C2372	3	7	C3391	4	21	C3958	5	25	C4817	4	23	C5341	8	64
C0338	9	78	C1142	3	2	C1711	3	1	C2373	3	7	C3426	4	22	C3959*	5	25	C4820*	4	22	C5342	8	65
C0361*	5	32	C1156*	6	38	C1712	3	1	C2374	3	6	C3459*	4	22	C3961*	5	25	C4908	5	34	C5345	8	66
C0363	3	9	C1162	3	2	C1714	6	43	C2380	3	7	C3600*	5	32	C3966	5	25	C4911	5	27	C5349	8	66
C0380	3	3	C1166	3	2	C1730	3	1	C2384	3	9	C3604*	5	32	C3968	5	25	C4912	5	36	C5352	8	66
C0388	5	25	C1168	3	2	C1740	3	1	C2385	4	19	C3619*	5	32	C3971	5	25	C4919	5	36	C5355	8	66
C0391	5	28	C1170	5	32	C1750	3	1	C2386	3	10	C3638*	5	30	C3974	5	26	C4920	5	26	C5358*	8	65
C0394	4	17	C1172	3	4	C1754	7	50	C2390	3	10	C3646*	5	29	C3975	5	25	C4926	5	34	C5361	8	64
C0414	10	93	C1185*	3	4	C1970*	4	22	C2398	3	10	C3664	5	29	C3983	5	26	C4931	5	36	C5362	8	65
C0417	5	25	C1187	3	4	C1985	8	70	C2402	4	17	C3673*	5	30	C3990	5	25	C4935	5	36	C5363	8	64
C0428*	4	24	C1190	10	94	C2010	8	66	C2410	4	18	C3676*	5	29	C3991	4	24	C4939	5	36	C5366*	8	65
C0493	5	36	C1202*	3	4	C2033	8	70	C2414	4	18	C3715*	5	30	C3993	5	25	C4940	5	32	C5368	8	65
C0506	9	78	C1226	3	4	C2080	5	28	C2427	4	19	C3717*	5	30	C4105*	5	34	C4943	5	32	C5375*	8	65
C0512	3	8	C1227*	3	4	C2113	4	18	C2429	4	19	C3723	5	30	C4106	5	34	C4965*	6	42	C5384	5	33
C0514	7	60	C1229	3	4	C2120	4	18	C2431	6	46	C3780*	4	24	C4121	5	34	C4983	5	35	C5391*	5	33
C0532	8	66	C1231	3	2	C2130	4	18	C2437	4	19	C3781*	4	24	C4144	5	28	C4987	5	36	C5393	8	65
C0537	4	20	C1257	3	2	C2131	4	17	C2446	4	19	C3785*	4	24	C4156	5	34	C4998	5	36	C5478	8	65
C0538	4	14	C1262	3	3	C2138	4	16	C2451	4	18	C3798	4	24	C4157*	5	34	C5104	8	62	C5500	8	64
C0550	8	66	C1268	3	3	C2152	4	16	C2457	4	18	C3807*	4	24	C4178	5	34	C5105	4	22	C5502	8	63
C0554	8	64	C1277	3	4	C2161	4	21	C2459	4	19	C3808*	4	23	C4183	5	28	C5122	8	61	C5525	8	67
C0579	6	48	C1278	3	3	C2202	4	20	C2478	4	18	C3814	4	19	C4266*	5	34	C5127	8	68	C5527	8	69
C0584	7	51	C1281*	3	3	C2223	4	20	C2479	4	18	C3822*	4	24	C4300	5	35	C5131	8	61	C5533	8	68
C0590	8	68	C1283*	3	4	C2226	4	19	C2610	4	19	C3826*	4	24	C4324	5	35	C5140	7	60	C5535	8	68
C0594	8	70	C1295*	3	4	C2232*	4	20	C2712	3	1	C3828*	4	23	C4328*	5	35	C5149	8	61	C5539	8	64





# Index

## EcoVerde Global Colour Book



CODE	PAGE	ROW	CODE	PAGE	ROW	CODE	PAGE	ROW	CODE	PAGE	ROW	CODE	PAGE	ROW	CODE	PAGE	ROW	CODE	PAGE	ROW			
C5541	8	64	C5941	7	58	C6613	7	57	C7204	6	38	C7381	6	44	C7689	7	55	C8112	9	82	C8345	9	75
C5544	8	64	C5942	7	59	C6619	7	57	C7207	6	43	C7382	6	41	C7699	6	48	C8113	10	86	C8347	9	81
C5546	8	63	C5943	7	58	C6629	7	57	C7211	6	39	C7383	6	39	C7900	7	49	C8114	3	12	C8348	9	81
C5547	8	63	C5946	8	71	C6638*	7	57	C7212	6	43	C7385*	6	47	C7903	7	52	C8116	3	5	C8349	4	13
C5561	8	68	C5951	5	35	C6645	7	57	C7215	6	38	C7388	6	44	C7904	7	53	C8119	9	75	C8353	3	11
C5566	8	64	C5953	7	58	C6654	7	55	C7221	6	38	C7389*	6	41	C7907	7	53	C8125	3	6	C8354	3	11
C5571	8	64	C5956	8	62	C6656	7	55	C7225	6	42	C7395	6	44	C7908	6	42	C8130	9	75	C8356	3	12
C5595	8	67	C5958	8	62	C6659	7	55	C7232*	6	38	C7396	6	44	C7912	10	94	C8133	3	5	C8357	3	11
C5621	8	63	C5964	8	62	C6668	7	57	C7234*	6	45	C7398	6	43	C7915	7	50	C8135	3	5	C8360	10	85
C5706	8	67	C5968	7	58	C6677	7	57	C7244	6	37	C7439	6	42	C7916	6	48	C8136	9	74	C8361	4	13
C5708	8	71	C5969	7	58	C6727	8	69	C7253	6	38	C7442	6	47	C7917	6	48	C8137	3	5	C8362	9	76
C5710	8	72	C5976	7	56	C6767	8	67	C7262	6	37	C7453	6	45	C7919	7	49	C8140	9	76	C8363	9	76
C5711	8	69	C5980	7	58	C6830	4	14	C7266	6	42	C7456*	6	45	C7921	5	36	C8145	3	12	C8368	4	13
C5713	8	72	C5981	7	55	C6902	7	53	C7269	6	43	C7472*	6	46	C7927	7	49	C8149	4	16	C8370	4	17
C5715	8	72	C5983	8	70	C6905	6	45	C7274	6	37	C7473*	6	46	C7928	6	40	C8154	3	1	C8377	4	15
C5717	8	67	C5984	8	70	C6911*	7	54	C7276	6	43	C7475	8	63	C7929	7	49	C8156	9	82	C8379	3	12
C5721	8	72	C5985	7	58	C6912	5	27	C7279	6	37	C7497	6	44	C7930	7	49	C8158	3	1	C8380	3	12
C5722	8	72	C5987	8	70	C6913*	7	54	C7281	6	45	C7503	7	51	C7932	7	49	C8167	3	6	C8381	3	12
C5724	8	67	C5989*	5	35	C6924*	7	54	C7284*	6	42	C7512	7	51	C7933	7	52	C8169	3	5	C8382	9	84
C5726	8	72	C5990	8	66	C6934*	7	54	C7289	6	43	C7514	7	51	C7939	7	49	C8171	9	74	C8383	9	84
C5727	8	72	C5991	7	58	C6936	7	53	C7295	6	42	C7517	6	40	C7940	7	51	C8172	9	75	C8384	9	84
C5742	8	71	C5993	7	56	C6952	7	55	C7298	7	53	C7519	6	39	C7941	7	49	C8173	9	74	C8389	10	86
C5743	8	68	C5999	8	62	C6954	7	55	C7305*	6	41	C7521	6	39	C7944	7	49	C8174	9	74	C8391	9	84
C5744	8	71	C6103*	7	54	C6958	7	55	C7309*	6	41	C7524	6	40	C7949	6	48	C8176	3	6	C8392	3	12
C5745	8	68	C6104*	7	54	C6973*	7	55	C7310*	6	41	C7529	6	48	C7952	7	51	C8178	3	5	C8396	9	82
C5748	8	68	C6117	7	59	C6982	7	54	C7313*	6	41	C7532	6	40	C7953	7	52	C8182	9	74	C8397	9	82
C5761	8	67	C6122	8	61	C6990	8	63	C7314	6	41	C7533	6	40	C7955	7	52	C8184	4	15	C8399	9	82
C5763	8	68	C6123	8	61	C6992	7	53	C7315	6	42	C7540	6	44	C7956	6	48	C8186	3	5	C8417	9	76
C5765	8	68	C6125	5	34	C6995*	7	54	C7316	6	42	C7542	7	51	C7957	7	52	C8202	3	12	C8449	4	16
C5768	9	73	C6126	7	57	C7020	4	15	C7318*	6	41	C7544	7	50	C7959	7	52	C8203	4	16	C8452	4	17
C5770	8	66	C6128	8	62	C7083*	7	55	C7324*	6	41	C7545	7	51	C7960	7	49	C8213	8	63	C8501	4	14
C5775	9	74	C6130*	7	54	C7100	7	50	C7326*	6	41	C7548	7	50	C7967	7	49	C8228	3	5	C8506	9	77
C5784	10	85	C6133	8	61	C7107	4	20	C7327*	6	47	C7549	6	45	C7969	7	49	C8241	10	86	C8510	9	73
C5798	8	71	C6136*	7	55	C7109	6	43	C7329*	6	41	C7551	6	39	C7970	6	48	C8248	10	86	C8515	9	73
C5803	5	33	C6138	8	65	C7110	6	44	C7330	6	42	C7553	6	39	C7975	7	52	C8250	3	12	C8517	9	83
C5810	4	18	C6156	7	59	C7114	6	38	C7331*	6	41	C7555	7	50	C7976	7	51	C8261	3	1	C8518	3	6
C5884	8	70	C6168	6	45	C7118	7	50	C7335*	6	40	C7560	6	40	C7977	7	50	C8264	9	74	C8520	4	14
C5900	7	58	C6173	7	56	C7136*	6	38	C7336	6	47	C7563	6	40	C7978	7	50	C8300	9	84	C8521	3	11
C5903	8	67	C6175	7	60	C7141	7	50	C7342*	6	46	C7564	6	47	C7979	7	52	C8304	10	85	C8524	4	14
C5904	9	74	C6178	7	56	C7142	6	38	C7343	6	44	C7565	6	45	C7980	7	51	C8305	9	81	C8526	4	14
C5906	8	69	C6310	6	45	C7143*	6	37	C7347	6	39	C7579	6	44	C7981	7	50	C8308	4	16	C8530	9	77
C5908	9	74	C6315*	7	54	C7145	6	37	C7349	6	44	C7580	6	44	C7982	6	47	C8316	4	16	C8534	9	84
C5909	8	71	C6328	5	30	C7151	6	37	C7350	6	39	C7581	6	39	C7985	6	47	C8319	3	12	C8538	4	13
C5915	7	58	C6342	7	53	C7152	6	43	C7354	6	46	C7582	6	46	C7988	6	48	C8322	3	12	C8569	10	85
C5918	7	56	C6358	7	60	C7156	6	38	C7357	6	40	C7586	6	40	C7991	7	50	C8323	3	6	C8570	10	85
C5920	7	56	C6377	7	53	C7157*	6	37	C7361	6	42	C7587	7	52	C7994	7	52	C8325	3	6	C8587	4	15
C5923	8	71	C6386	7	59	C7163	6	37	C7364*	7	56	C7589	6	40	C7996	6	47	C8326	9	81	C8592	4	15
C5927	8	69	C6388	7	59	C7167	6	42	C7366*	6	46	C7594	6	40	C7998	7	52	C8328	9	81	C8593	9	84
C5930	8	69	C6389*	7	56	C7170	6	45	C7368	6	47	C7598	6	47	C7999	7	51	C8331	9	75	C8597	9	84
C5935	6	48	C6390	7	59	C7172	6	43	C7369*	6	47	C7608	6	47	C8101	3	6	C8334	9	76	C8598	10	85
C5936	7	58	C6409	7	53	C7177	6	37	C7370*	6	46	C7618	6	39	C8106	9	75	C8336	9	77	C8599	4	13
C5937	7	59	C6605	7	56	C7194	6	37	C7375*	6	46	C7642	7	57	C8107	9	75	C8337	9	84	C8601	4	14
C5938	7	58	C6607	7	55	C7197	6	43	C7379	6	46	C7656	7	51	C8109	4	15	C8343	9	82	C8602	9	77
C5939	5	26	C6610	7	56	C7201	6	44	C7380	6	46	C7669*	7	57	C8111	9	75	C8344	9	75	C8603	9	84

\* For Dual Duty, please note that these shades are dyed with reactive dyes to achieve the chroma which is not resistant to any bleaching treatments.

In addition, the cotton wrap in Dual Duty is dyed with a different dye type compared to the dyestuff used for the physical thread tassel.

\* For high wash and Denim sewing thread, please note that these shades are dyed with a special selection of disperse dyes compared to the dyestuffs used for the physical thread tassel.

It is recommended to review the colour against the shade card thread tassel under the required light source as metamerism may occur due to the different dyes used.

We make every effort to ensure continuity of shade. However, a slight variation in shades may occur in threads made with different raw materials and substrates including virgin and recycled fibres.

Please note, that since this shade card is produced with recycled polyester thread, the shades supplied may be slightly brighter in chroma for virgin fibre.



# Index

## EcoVerde Global Colour Book



CODE	PAGE	ROW	CODE	PAGE	ROW	CODE	PAGE	ROW	CODE	PAGE	ROW	CODE	PAGE	ROW	CODE	PAGE	ROW	CODE	PAGE	ROW			
C8112	9	82	C8345	9	75	C8604	8	72	C8699	9	78	C8985	9	80	C9383	10	89	C9676	10	91	C9995	10	93
C8113	10	86	C8347	9	81	C8605	10	85	C8702	4	20	C8986	9	80	C9387	10	91	C9678	10	88	C9998	10	93
C8114	3	12	C8348	9	81	C8606	9	84	C8707	4	20	C8989	9	79	C9388	10	88	C9680	8	68	C9999	8	70
C8116	3	5	C8349	4	13	C8607	10	85	C8716	4	17	C8991	9	79	C9392	10	91	C9681	10	93	08ANT	10	95
C8119	9	75	C8353	3	11	C8609	9	73	C8726	4	17	C8996	9	81	C9393	10	87	C9684	10	91	09ANT	10	95
C8125	3	6	C8354	3	11	C8611	9	77	C8736	4	16	C8999	9	79	C9394	10	90	C9686	10	92	121ZR	10	96
C8130	9	75	C8356	3	12	C8612	9	73	C8749	4	18	C9114	10	89	C9398	9	76	C9694	10	92	122ZR	10	96
C8133	3	5	C8357	3	11	C8614	9	83	C8752	4	16	C9117	9	82	C9404	10	89	C9697	8	69	13ANT	10	96
C8135	3	5	C8360	10	85	C8624	4	15	C8758	4	17	C9121	10	90	C9424	10	89	C9698	8	69	15ANT	10	96
C8136	9	74	C8361	4	13	C8625	3	11	C8762	3	9	C9122	10	86	C9444	9	73	C9700	10	94	17ANT	10	96
C8137	3	5	C8362	9	76	C8627	4	14	C8770	3	9	C9125	9	83	C9455	8	64	C9710	10	94	30ANT	10	96
C8140	9	76	C8363	9	76	C8628	3	11	C8774	3	11	C9131	10	89	C9491	10	88	C9718	10	88	39ANT	10	97
C8145	3	12	C8368	4	13	C8629	9	77	C8775	9	80	C9140	10	90	C9493	10	92	C9750	10	94	41ANT	10	96
C8149	4	16	C8370	4	17	C8630	9	76	C8776	4	15	C9142	10	89	C9501	10	88	C9760	10	94	44ANT	10	96
C8154	3	1	C8377	4	15	C8631	9	84	C8779	4	14	C9153	9	83	C9505	10	87	C9770	10	94	513YQ*	10	97
C8156	9	82	C8379	3	12	C8634	4	13	C8781	3	10	C9156	9	82	C9519	8	67	C9774	5	32	55ANT	10	96
C8158	3	1	C8380	3	12	C8636	10	85	C8786	4	15	C9164	10	86	C9522	9	83	C9782	10	91	69ANT	10	96
C8167	3	6	C8381	3	12	C8638	4	13	C8800	4	16	C9166	10	86	C9524	10	87	C9792	10	93	72ANT	10	96
C8169	3	5	C8382	9	84	C8639	4	13	C8806	3	9	C9167	10	86	C9537	10	91	C9824	10	95	75ANT	10	96
C8171	9	74	C8383	9	84	C8640	3	12	C8810	9	78	C9170	10	86	C9548	6	39	C9835	10	91	NATRL	3	1
C8172	9	75	C8384	9	84	C8645	4	13	C8815	10	87	C9171	9	82	C9553	9	78	C9849	6	39			
C8173	9	74	C8389	10	86	C8649	9	78	C8834	5	28	C9173	9	75	C9583	8	64	C9853	10	95			
C8174	9	74	C8391	9	84	C8650	9	78	C8859	4	16	C9176	9	82	C9588	8	70	C9863	10	94			
C8176	3	6	C8392	3	12	C8652	9	79	C8863	4	17	C9178	10	87	C9590	10	90	C9870	10	88			
C8178	3	5	C8396	9	82	C8654	8	72	C8864	5	28	C9187	9	82	C9592	8	69	C9877	10	94			
C8182	9	74	C8397	9	82	C8655	9	79	C8888	9	79	C9189	10	86	C9600	8	70	C9884	9	78			
C8184	4	15	C8399	9	82	C8656	9	80	C8894	9	79	C9199	3	11	C9601	8	63	C9900	7	59			
C8186	3	5	C8417	9	76	C8657	4	14	C8897	9	80	C9215	5	36	C9602	8	63	C9902	7	53			
C8202	3	12	C8449	4	16	C8658	4	14	C8905	9	79	C9218	9	83	C9606	8	69	C9905	10	94			
C8203	4	16	C8452	4	17	C8659	10	85	C8918	4	15	C9249	9	83	C9611	9	76	C9911	10	92			
C8213	8	63	C8501	4	14	C8660	4	14	C8924	5	27	C9294	9	83	C9612	9	77	C9913	7	52			
C8228	3	5	C8506	9	77	C8663	9	83	C8925	9	74	C9304	9	76	C9613	9	77	C9918	8	69			
C8241	10	86	C8510	9	73	C8664	9	73	C8929	9	80	C9308	10	87	C9614	9	77	C9920	10	92			
C8248	10	86	C8515	9	73	C8665	9	83	C8930	9	74	C9309	10	85	C9616	10	89	C9923	8	71			
C8250	3	12	C8517	9	83	C8667	4	13	C8933	9	80	C9310	9	83	C9623	10	89	C9936	10	95			
C8261	3	1	C8518	3	6	C8668	4	13	C8937	9	81	C9311	9	76	C9625	10	90	C9939	10	95			
C8264	9	74	C8520	4	14	C8669	4	13	C8938	9	80	C9313	10	87	C9627	10	92	C9945	10	94			
C8300	9	84	C8521	3	11	C8671	9	77	C8939	9	80	C9316	9	75	C9628	10	90	C9948	10	94			
C8304	10	85	C8524	4	14	C8674	9	77	C8940	9	80	C9325	9	82	C9630	10	91	C9949	10	92			
C8305	9	81	C8526	4	14	C8676	10	85	C8941	8	72	C9326	9	76	C9631	10	90	C9952	10	93			
C8308	4	16	C8530	9	77	C8677	9	77	C8946	8	71	C9332	10	87	C9633	10	89	C9954	10	93			
C8316	4	16	C8534	9	84	C8678	9	73	C8947	8	71	C9335	10	86	C9640	8	63	C9959	10	89			
C8319	3	12	C8538	4	13	C8679	10	87	C8948	8	71	C9338	7	53	C9643	8	72	C9961	10	93			
C8322	3	12	C8569	10	85	C8680	9	78	C8950	8	71	C9348	10	90	C9652	10	89	C9962	10	92			
C8323	3	6	C8570	10	85	C8682	9	73	C8953	9	81	C9353	10	87	C9655	10	88	C9967	10	93			
C8325	3	6	C8587	4	15	C8683	9	73	C8955	9	81	C9354	9	75	C9656	10	91	C9969	10	95			
C8326	9	81	C8592	4	15	C8684	10	87	C8956	9	81	C9363	10	89	C9657	10	88	C9970	10	95			
C8328	9	81	C8593	9	84	C8685	9	79	C8963	9	81	C9370	10	90	C9662	10	90	C9971	8	70			
C8331	9	75	C8597	9	84	C8686	9	78	C8966	9	81	C9372	10	90	C9664	7	56	C9975	8	70			
C8334	9	76	C8598	10	85	C8687	8	72	C8970	9	79	C9373	10	88	C9665	10	88	C9979	10	93			
C8336	9	77	C8599	4	13	C8688	4	15	C8973	9	73	C9374	10	87	C9666	10	92	C9981	10	93			
C8337	9	84	C8601	4	14	C8692	9	74	C8978	9	79	C9375	10	91	C9667	10	88	C9984	10	95			
C8343	9	82	C8602	9	77	C8694	9	78	C8979	9	80	C9376	10	91	C9671	10	90	C9987	8	69			
C8344	9	75	C8603	9	84	C8696	9	79	C8982	9	73	C9377	8	68	C9675	10	88	C9993	10	93			